



NARAYANA
COLLEGE OF NURSING



Growth and Development of schooler

Introduction :-

School age children between the age of 6 -12 years. The child at this stage become increasingly more independent while participating in activities outside the home.

Terminologies:-

- 👉 schooler
- 👉 Growth
- 👉 Development
- 👉 preadolescence
- 👉 Gross motor
- 👉 Fine motor
- 👉 Latency stage
- 👉 Mythical Literal Faith
- 👉 Preoperational stage
- 👉 Conventional morality



Definition:-

Schooler - The age between 6 - 12 years of child.

Growth - Growth is a progressive increase in size of a child or parts of a child .

Development - Development is a progressive increase in skill capacity to functions.

1. Physiological Growth and Development:-

1) Biological Growth:-

AGE	WEIGHT	HEIGHT
6-8 years	17.5- 25.5 kg Gains 3.8 kg yearly	110-121 cm Gains 1.13 cm
8-10 years	22-32 kg Gains 3.8 kg yearly	121.5 cm- 136.5 cm Gains 1.13 cm yearly
11 years	Weight 25.5 – 39.5 kg Gains 3.8 kg yearly	131.5 -147.5 cm
12 years	BOYS- 30-48 kg GIRLS- 30-50 kg	BOYS- 142-158 cm GIRLS-144-160 cm

a) Body Proportion:

- ✓ school age boys and girls are Long - Legged.
- ✓ Facial Proportion changes due to face growth.

b) Dentition:

Age of loose teeth.

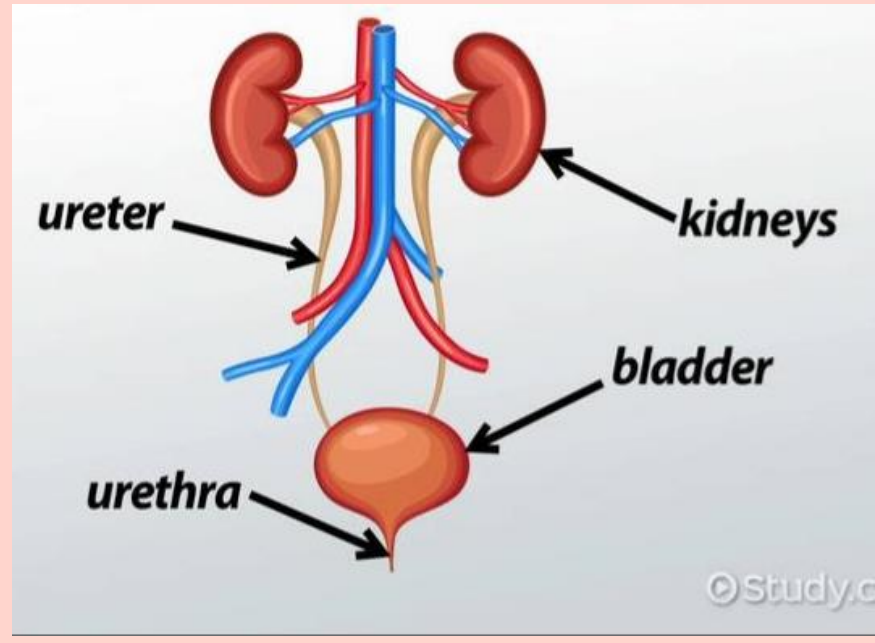
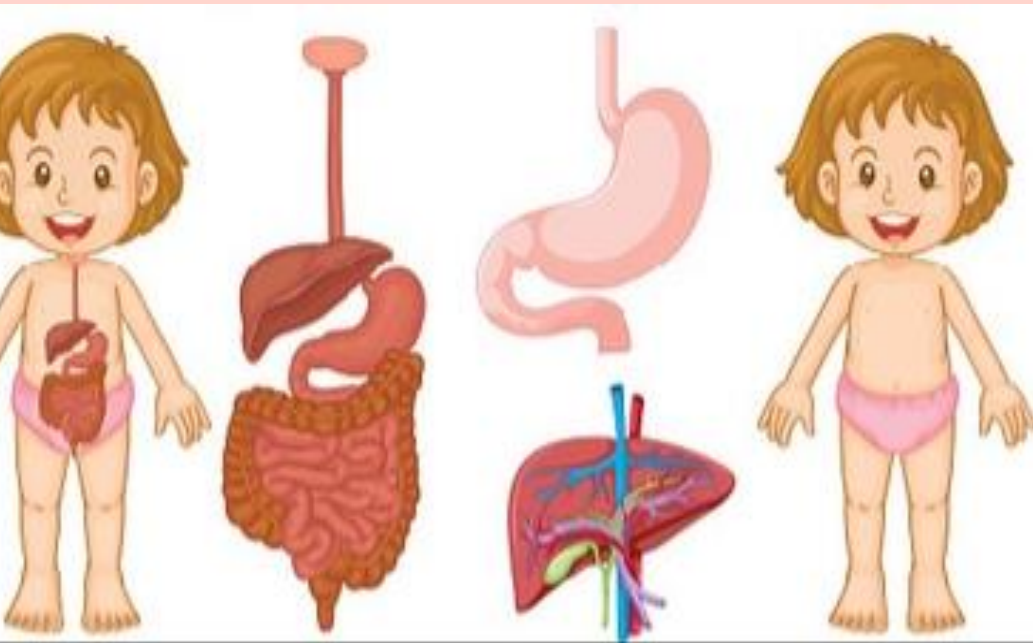


2) Physiological Development:-

	6-8 YEARS	8-10 YEARS	10 YEARS	12 YEARS
PULSE	90 + or - 15/min	85 +or - 10/min	90 +or- 20/min	BOY- 90+or-20/m GIRLS- 85+or- 20/min
RESPIRATION	21 +or- 3/min	20 +or- 3/min	19+ or- 3/min	19 +or - 3/min
BLOOD PRESSURE	100/60 +or - 16/10 mm hg	102/60 +or - 1 6/10 mm hg	109/58 + or - 16/10 mm hg	113/59 + or - 18/10 mm hg

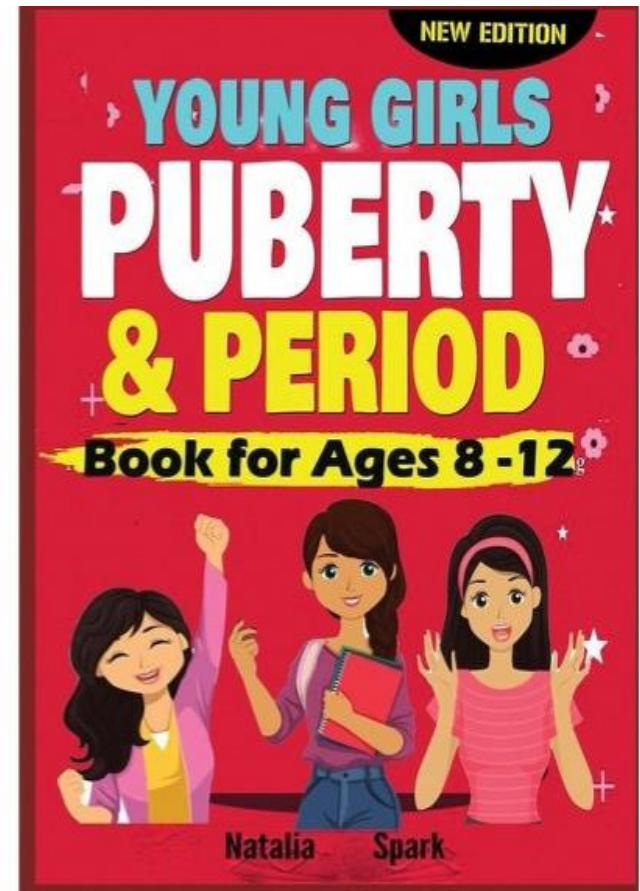
- ✓ **Cardiovascular system**
- ✓ **Gastrointestinal system**
- ✓ **Respiratory system**
- ✓ **Genitourinary system**
- ✓ **Nervous system**
- ✓ **Immune system**
- ✓ **Skeletal system**
- ✓ **Motor system**





✓ Reproductive system:

- Reproductive system or prepubescence.
- Occurs during Preadolescence.
- Difference in growth among boys & girls.
- Average age of puberty is
 - ☞ 12 years in girls
 - ☞ 14 years in boys



2. Motor Development:-

1) Gross motor - a) 6 - 8 years:



b) 8 -10 years :



c) 10 - 12 years :



2) Fine motor --

a) 6 - 8 years

b) 8 - 10 years

c) 10 - 12 years



3) Self care --

✓ Feeding skills

✓ Grooming and Dressing skills

a) 6 - 8 years :



b) 8 - 10 years :



C)10 - 12 years :



4) Sensory Development -

★ At 6 years - central visual acuity is established.

★ At 7 years - visual acuity is 20 /20.



★ The sense of Taste and Smell increases.



3. Psychosocial Development :-

★ They have a sense of Industry and Inferiority.

a) 6 - 8 years--



b) 8 - 10 years--

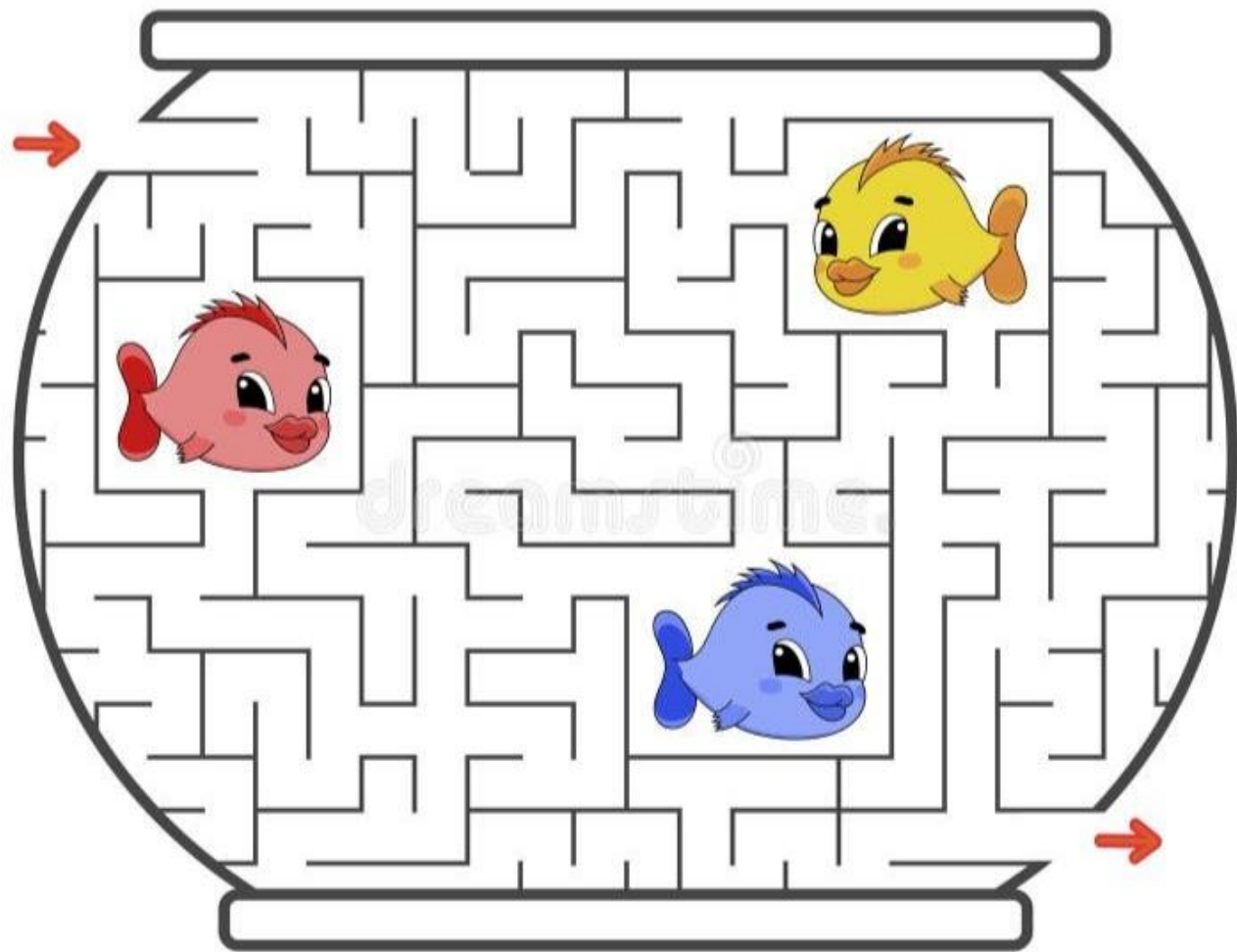


c) 10 - 12 years--



Self Control: Activities for Children





4. Psychosexual Development : -

★ Latency period (stage - 4)



5. Moral Development : -

a) Preconventional Morality--

Stage - 2 (4 to 7 years)

✓ Egocentricity



b) Conventional Morality--

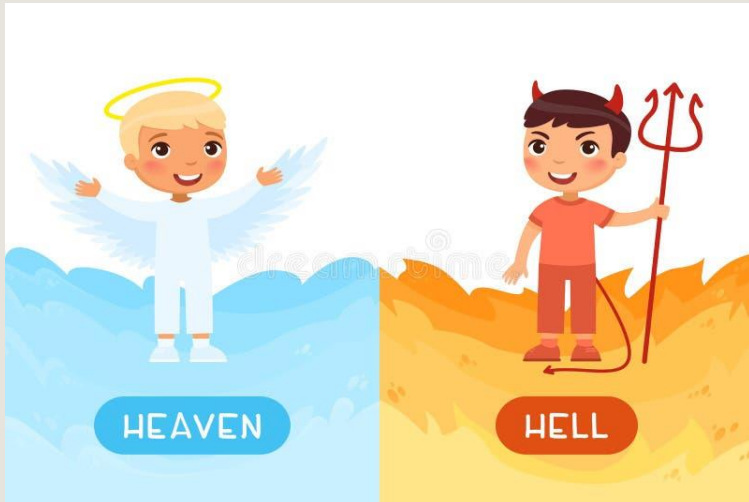
Stage 3 and 4 (7 - 12 years).

✓ We need a Law and Order.



6. Spiritual Development : -

Mythical - Literal Faith



WORD PUZZLES FOR KIDS

Find and mark the words from the box



G	O	A	T	P	B	N	C
J	K	I	S	Z	R	M	A
E	S	C	O	D	W	H	T
D	H	L	H	P	D	H	O
I	E	V	D	I	C	O	W
H	E	Z	O	O	H	R	G
K	P	I	G	T	I	S	R
W	U	X	Q	C	H	E	A
D	U	C	K	F	Y	M	O
G	P	S	C	H	I	C	K



7. Intellectual Development :-

↳ also known as Cognitive Development

a) Preoperational stage -

stage -2 (4 to 7 years)

Intuitive stage.



TELLING THE TIME

1 o'clock, 2 o'clock, 3 o'clock, 4 o'clock, 5 o'clock, 6 o'clock, 7 o'clock, 8 o'clock, 9 o'clock, 10 o'clock, 11 o'clock, 12 o'clock

5 to, 10 to, quarter to, 20 to, 25 to, half past, 5 past, 10 past, quarter past, 20 past, 25 past



My First Calendar

Months

January

February

March

April

May

June

August

September

October

November

December

Day

Tuesday

Date

2 2

Month

July

Weather

Sunny

Season

Spring

Weather

Partly Cloudy

Days

Monday

Wednesday

Thursday

Friday

Saturday

Sunday

Dates

1	1		
3	4	5	6
7	8	9	0

Seasons

Autumn

Winter

Cloudy

Rain

Sleet

Snow

b) Concrete operational stage - 7 to 11 years



c) Formal operational stage - (11+ years)



8. Language Development :-

👉 Receptive Language

👉 Expressive language.



9. Play Therapy :-

Serves as a learning tool for children.



10. Nutrition : -

Requires 80 cal / kg of body weight.



11. Sleep and Rest : -





THANK
YOU