

**NARAYANA COLLEGE OF NURSING**  
**CHINTHAREDDY PALEM, NELLORE.**

**DEPARTMENT OF COMMUNITY HEALTH NURSING**  
**ENRICHMENT COURSE**

**ON**

**METABOLOMICS**

**Narayana college of nursing, Department of Community Health Nursing** organized an enrichment course on “**Metabolomics**” was held on 08/05/2017 and 09/05/2017 between 8 AM to 1 PM in auditorium.

The programme started with prayer song by III year B.Sc. (N) students followed by welcome song by II year B.Sc. (N) students and lamp was lightened by Ms. Rajeswari, vice principal, Narayana college of nursing, Mrs.Vanaja Kumari, vice principal, Narayana college of nursing, Mrs.Latha, H.O.D, Dept of MSN, Mrs.Pratima, H.O.D Dept of OBG, Mrs. Kalpana, vice principal, Sree Narayana nursing college, Mrs.Menaka S.P., H.O.D, Dept of CET . Welcome address was given by Mrs. Kalpana, Associate professor, Dept of Community health Nursing.

Totally 76 participants were registered for the programme. Before starting the session pre test was conducted for all the participants.

Frist day on 05.05.2017, the session was started at 8.30AM. Introduction on Metabolomics was dealt by Mrs.Dr.S. Indira, Historical development of metabolomics dealt by Mrs.B.Vanaja kumari, Concept of Metabolomics was dealt by Mrs. B. Kalpana

Second day On 09.05.2017, the session was started at 8.30AM. Application od metabolomics was dealt by Mrs. K. Kantha, Profiling methods in metabolomics was dealt by Ms. N. Swapna and Approaches of metabolomics was dealt by Mrs. B. Kavitha and Importance of Metabolomics delt by Ms. Lavanya. B. At the end of the session post test was conducted. Certificates were distributed to the participants, programme was ended with vote of thanks by Mrs. K. Kantha followed by National Anthem.

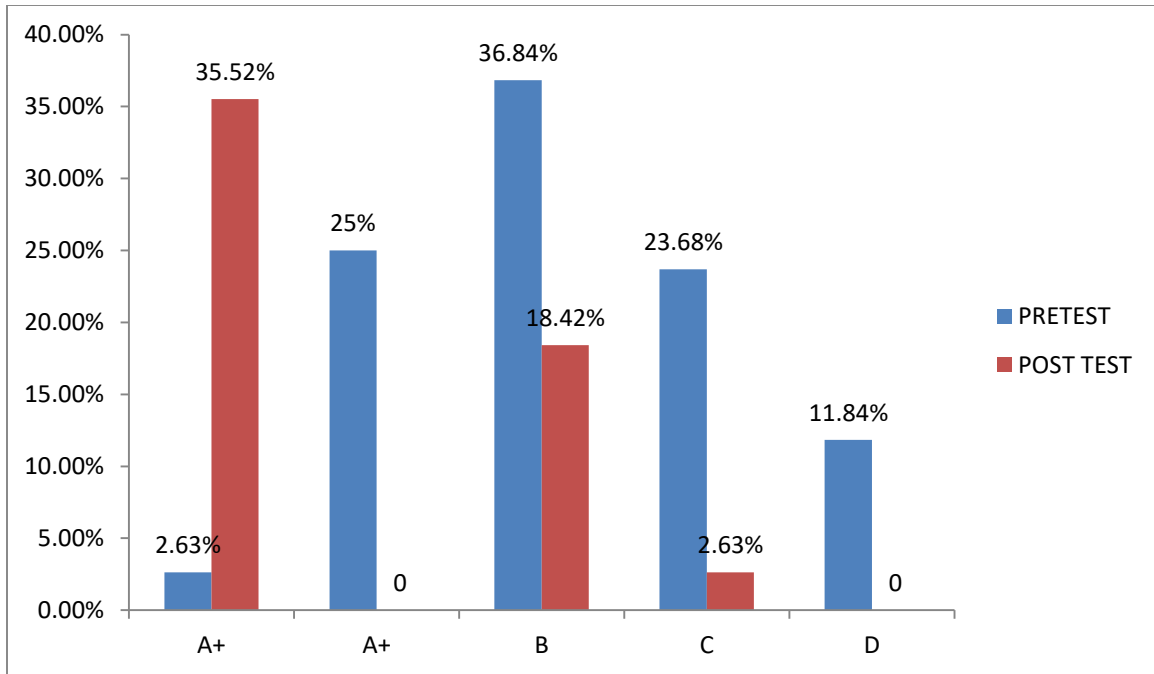
## Course enrichment pre test and post test analysis:

**Table-1: Frequency and Percentage distribution of level of knowledge among Nursing Faculty and students**

**N=76**

GRADE	NURSING FACULTY AND STUDENTS			
	PRE-TEST		POST TEST	
	FREQUENCY (F)	PERCENTAGE (%)	FREQUENCY (F)	PERCENTAGE (%)
A+	2	2.63	27	35.52
A	19	25	33	43.42
B	28	36.84	14	18.42
C	18	23.68	2	2.63
D	9	11.84	0	0
<b>TOTAL</b>	<b>76</b>	<b>100</b>	<b>76</b>	<b>100</b>

Table-1: shows frequency and percentage distribution of level of knowledge among nursing faculty and students, out of 76 participants in pre test, 2(2.63%) are having A+ grade knowledge, 19(25%) are having A grade knowledge, 28(36.84%) are having B grade knowledge, 18(23.68%) are having C grade knowledge, and 9(11.84%) are having D grade knowledge. In post test, 27(35.52%) are having A+ grade knowledge, 33(43.42%) are having A grade knowledge, 14(18.42%) are having B grade knowledge, and 2(2.63%) are having C grade knowledge.



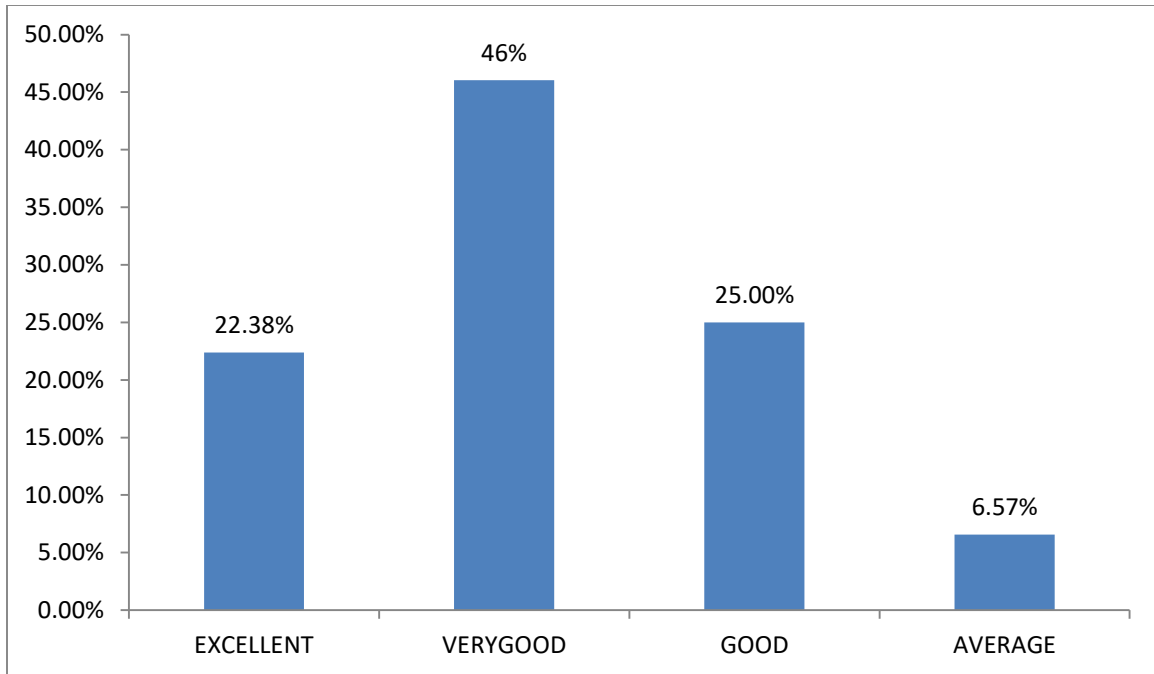
**Fig-1: COMPARISON OF PRE TEST & POST TEST SCORES AMONG NURSING FACULTY AND STUDENTS**

**Table-2: Frequency and Percentage distribution of feedback analysis among Nursing Faculty and students**

**N=76**

RATING	NURSING FACULTY AND STUDENTS	
	POST-TEST	
	FREQUENCY (F)	PERCENTAGE (%)
EXCELLENT	17	22.38
VERYGOOD	35	46.05
GOOD	19	25
AVERAGE	5	6.57
TOTAL	76	100

Table-2: Shows frequency and percentage distribution of feedback analysis among nursing faculty and students, out of 76 participants, 17(22.38%) replied excellent, 35(46.05) answered very good, 19(25) said good and 5(6.57%) responded that course enrichment programme is average.



**Fig-2: FEEDBACK ANALYSIS AMONG NURSING FACULTY AND STUDENTS**

**CONCLUSION:**

The above result shows that there was effectiveness of course enrichment on **EMF AND HEALTH** in improving the level of knowledge among faculty and students .

**Organizing secretary**

Mrs.Vanaja Kumari

HOD of Community Health Nursing

Narayana College of Nursing

**Organizing chairperson**

Dr.Indira.S, M.Sc(N), ph.D

Principal

Narayana College of Nursing

**Photos of the programme:**



